

# OptiGrill Plaques gaufres



Compatible avec:  
Compatible with:  
Kompatibel mit:  
Geschikt voor:  
Compatible con:  
Compatível com:  
Compatible con:  
Συμβατό με:  
Kompatible med:  
Kompatibel med:  
Yhteensopivuus:  
Pasuje do:  
Совместимость:  
Сумісний з:  
Kompatibilní s:

Kompatibilný s:  
A következővel kompatibilis:  
Съвместими с:  
Kompatibilno s:  
Compatibil cu:  
Združljivo z:  
Kompatibilno sa:  
Kompatibilno sa:  
Ühildub:  
Tinka:  
Saderigas ar:  
**호환 가능 :**  
Uyumlu olduğu cihazlar:  
متوافقة مع:  
سازگار با:

Modèles:  
Models:  
Modelle:  
Modellen:  
Modelos:  
Modelos:  
Modelli:  
Μοντέλα:  
Modeller:  
Modeller:  
Modeller:  
Mallit:  
Modele:  
Modeli:  
Modeli:  
Modely:

Modely:  
Modellek:  
Modeli:  
Modeli:  
Modele:  
Modeli:  
Modeli:  
Modeli:  
Mudeliid:  
Modeliaid:  
Modelj:  
**모델 :**  
Modeller:  
الموديلات:  
مدل ها:

OptiGrill+ Initial  
OptiGrill+  
OptiGrill Smart

GC706  
GO706  
GC71 xx

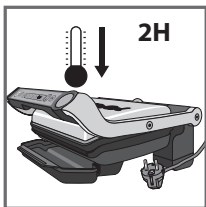
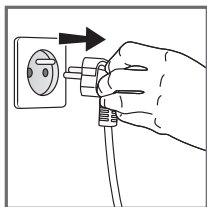
GC73 xx  
GR71 xx  
GO71 xx

series

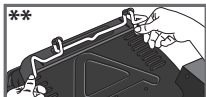
FR  
EN  
DE  
NL  
ES  
PT  
IT  
EL  
DA  
SV  
NO  
FI  
PL  
RU  
UK  
CS  
SK  
HU  
BG  
HR  
RO  
SL  
BS  
SR  
ET  
LT  
LV  
KO  
TR  
AR  
FA

## **Recommendations for the use of waffle plates:**

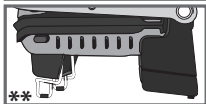
- Remove the packaging, various stickers and accessories on the outside and inside of the plates.
- Read these instructions carefully and keep them close to hand; the instructions are common to different models.
- Please check the appliance instructions and these recommendations when using the waffle plates.
- Ensure that both sides of the plates are properly cleaned before use.
- To avoid damaging the plates, only use them on the appliance for which they were designed (i.e. do not put them in an oven or on a gas or electric hob, etc.).
- Make sure the plates are stable, correctly positioned and firmly attached to of your appliance. Only use the plates provided or purchased from an approved service centre.
- To preserve the non-stick coating of the waffle plates, always use a plastic or wooden spatula.
- Never cut food directly on the plates.
- Do not place the hot waffle plates under water or on a fragile surface.
- To preserve the non-stick coating of the waffle plates, do not leave them to heat up too long if empty.
- The waffle plates should never be handled when hot.
- Do not heat the appliance without the cooking plates.
- Before using your appliance for the first time, wash the plates, then pour a little cooking oil onto the waffle plates and wipe off with a soft cloth.
- Never place cooking utensils on the appliance's cooking surfaces.
- We recommend using a sponge, hot water and a little washing-up liquid to clean the cooking plates; rinse thoroughly to remove any residue. Wipe them carefully with a paper towel. Alternatively, the cooking plates are dishwasher safe.
- Do not use metal scouring pads, steel wool or abrasive cleaners to clean any part of the cooking plates, use only nylon or non-metallic cleaning pads. If food has stuck to the cooking plates, soak in hot water with washing-up liquid.



1. If your OptiGrill is already turned on and you wish to use your waffle plates, unplug the grill and allow to cool down for at least **2** hours.



2. Turn the appliance around and attach retractable stand to ensure the appliance is level. This stops the batter spilling over the edges when filling the plates.





3. Open the grill, remove the cooking plates and replace them with the waffle plates. Install the lower plate first, then the upper plate.

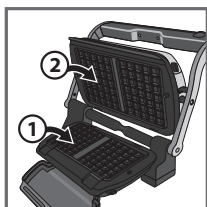
2




4. Close the appliance and plug it in.

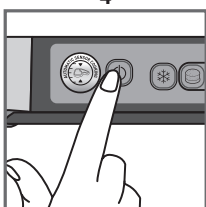
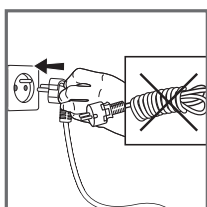
5. Press the On/Off button, the  and  buttons will flash, and the colour indicator will display green .

3



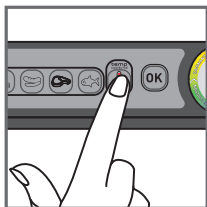
6. Press the  button until the orange or red indicator is ready (based on the desired doneness level).

4

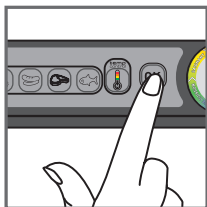


\* position for cooking with the grill plates and the snacking accessory.

\*\* position for cooking with the waffle plates.



6



7



8



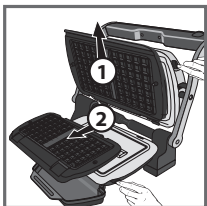
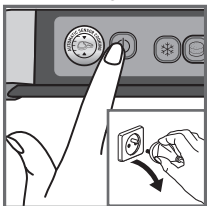
9



10



11



12



13

7. Start cooking by pressing the **OK** button. The **READY** and **OK** buttons will stop flashing; the colour indicator will continue to flash until the appropriate temperature is reached.

8. When the orange or red indicator is ready, the grill beeps and the colour indicator stays lit. The appliance is ready to be used for cooking.

9. Open the appliance and fill the lower plate using a dough ladle (do not fill the ladle to the brim) until the top of the little squares is covered. The drip pan must be installed in case of a dough leak. Once the plate mould has been filled, close the appliance.

10. Leave to cook for **3-4 minutes**. Open the appliance, remove the waffles. You can prepare a second batch of waffles immediately by adding more waffle batter.

11. Press the on/off button to stop cooking. All the buttons will turn off and the grill will stop cooking.

When you've finished, turn off the appliance, unplug it and leave to cool for **2 hours**.

12. Open the grill and remove the waffle plates; remove the upper plate first, then the lower plate.

**N.B** : The plates may still be hot, therefore it is advisable to use oven gloves.

13. The waffle plates are dishwasher-safe.

8

FR	p.	3 – 5
EN	p.	6 – 8
DE	p.	9 – 11
NL	p.	12 – 14
ES	p.	15 – 17
PT	p.	18 – 20
IT	p.	21 – 23
EL	p.	24 – 26
DA	p.	27 – 29
SV	p.	30 – 32
NO	p.	33 – 35
FI	p.	36 – 38
PL	p.	39 – 41
RU	p.	42 – 44
UK	p.	45 – 47
CS	p.	48 – 50
SK	p.	51 – 53
HU	p.	54 – 56
BG	p.	57 – 59
HR	p.	60 – 62
RO	p.	63 – 65
SL	p.	66 – 68
BS	p.	69 – 71
SR	p.	72 – 74
ET	p.	75 – 77
LT	p.	78 – 80
LV	p.	81 – 83
KO	p.	84 – 86
TR	p.	87 – 89
AR	p.	92 – 90
FA	p.	95 – 93